

HEALTH SYSTEMS THROUGH CRISIS AND RECOVERY

26.09.2022 - 07.10.2022

Intensive Course - 12 th edition

Scuola Superiore Sant'Anna - Pisa - Italy



BACKGROUND

Spurred by misrule, conflict, impoverishment, social upheavals, environmental degradation and displacement, crises multiply the world over. Shocks and stressors intersect, prolonging crises and thwarting recovery attempts. Health care – starved of capacity and resources - is unable to respond to old and new needs.

The complexity of these turbulent contexts poses daunting challenges to health workers – both national and international – who are called to provide health services and contribute to their recovery. A poor grasp of the context and of the health determinants at play has generated misconceived interventions resulting in fragmentation, waste and ineffectiveness.

This training programme intends to critically review this situation, considering experiences gathered in an array of crises, past and present. This empirical foundation is used to suggest appropriate conceptual tools aimed at engaging effectively in uncertain and unstable settings.

NATURE OF THE COURSE

The Course, held for the first time in 2005, has evolved substantially since then. By constantly updating its contents, introducing new study topics and materials, and inviting new experienced lecturers, the course programme is actively kept in progress. It maintains a degree of flexibility to discuss in detail topics of particular interest to participants.



MAIN TOPICS

The course content is updated and modified every year. These are some of the main topics regularly discussed:

- The crisis environment; international and humanitarian law; development, the aid system and its politics; aid management. Contributions of social sciences and other disciplines to health intelligence.
- Systems thinking applied to management practice, including communication, information analysis and responses of health systems to shocks and stressors.
- Health policy analysis, planning and financing, Private and informal healthcare provision. Evaluating interventions.
- Availability and utilisation of health-related resources: personnel, medicines, facilities, and their management.
- Health service delivery issues: controlling communicable diseases, serving marginalised communities, addressing demand-side barriers, improving quality of care.
- Contributing to the recovery of disrupted health systems, through analysis, research, negotiation, appraisal of options, forecasting and implementation.

METHODOLOGY

The Course is taught in English. It is intensive in nature and demands from participants a pro-active attitude. Interaction with the trainers is encouraged using case studies and practical exercises.

Ample space is devoted to testimonies and reflections drawn from the personal experience of trainers and trainees.

Participants will conduct an in-depth analysis of a chosen distressed healthcare arena through the study of selected documents and group work.

The study materials revolve around a variety of troubled situations, which include conflict-ridden countries and regions, as well as other crises. An exploration of the existing literature will complement each training session.

Participants will receive a rich portfolio of selected documents.

Participants are required to prepare themselves by familiarizing themselves with selected reading materials, which will be made available on-line in advance of the Course.

This preparatory work requires at least 20 hours and has to be regarded as a precondition to the full fruition of the course.

COURSE FEE

- 1,500 euros for participants sponsored by any organization or by their employer;
- 1,200 euros for self-sponsored participants.

An early bid discount is reserved for participants applying before 4 July 2022 (costs will be reduced to 1,100 euros and 800 euros respectively).

The cost includes tuition fee, reference material and lunch on class days.

Participants are required to make their own arrangements for accommodation, travel and visa (a list of possible accommodations will be made available).

Please consider that the costs for a two-week stay in Pisa amount to roughly 1,100 euros.

SELECTION PROCESS

The Course is open to a maximum of 30 participants. Applications will be considered on a rolling basis.

Accepted applicants will be informed within two weeks from the submission of their application.

Applicants will be selected on the basis of the information provided in their CVs and in the on-line application form, which is available at: www.hscr.santannapisa.it.

Upon submitting the application form, please remember to attach your CV.

In case of problems with the on-line procedure please contact hscr@sss.it.

Applications must be received no later than 29 August 2022.

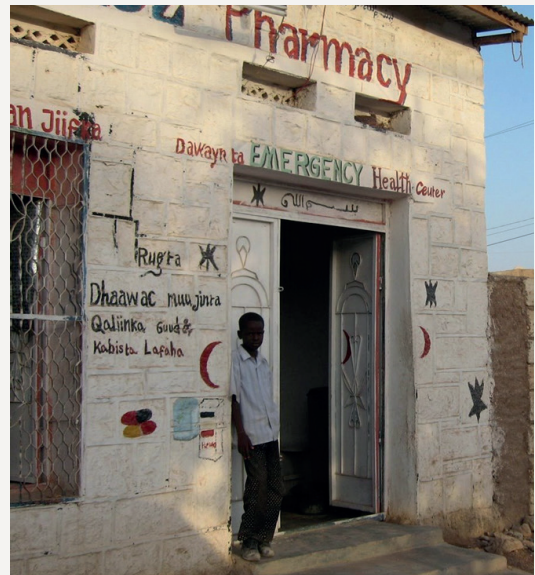
Successful applicants who are citizens of non-EU member states and who reside outside Italy, are strongly advised to immediately contact the Italian Embassy or consular authorities in their country of residence in order to apply for a visa (for more info please see: <https://vistoperitalia.esteri.it/home/en>).

WHO CAN APPLY

The Course focuses on health issues, but it is open to professionals from other disciplines.

Applicants must have a university degree or the equivalent of 3 years of relevant working experience.

They must have a sound working knowledge of English.



CERTIFICATE AND CREDITS

Participants who have attended at least 80% of the classes will receive a Certificate of Attendance.

A maximum of 4 academic credits (in accordance with the European Credits Transfer and Accumulation System - ECTS) will be awarded to candidates successfully completing the Course.

DIRECTION COMMITTEE & TEACHING STAFF

The Course is designed and coordinated by Enrico Pavignani MD, assisted by Prof. Emanuele Sommario.

THE ITPCM & THE SCUOLA SUPERIORE SANT'ANNA

The post-graduate International Training Programme for Conflict Management (ITPCM) is offered by the Scuola Superiore Sant'Anna, a public university which promotes education and research through under and post-graduate studies.

The ITPCM was established in 1995 with the aim of creating a structure able to respond to the training needs of personnel involved in international field operations, It has since expanded its activities to include research and consultancy in the areas of human rights, humanitarian assistance, election monitoring, DDR, project design, monitoring and evaluation.



Sant'Anna
Scuola di Avanzate Studies - Pisa



Alta Formazione
Certificata UNI EN ISO 9001

FOR ANY ADDITIONAL INFORMATION

HSCR Course Secretariat

via Cardinale Maffi, 27 - 56127 PISA (Italy)

TEL. +39 050 882 655

EMAIL: hscr@santannapisa.it

WEBSITE: www.hscr.santannapisa.it